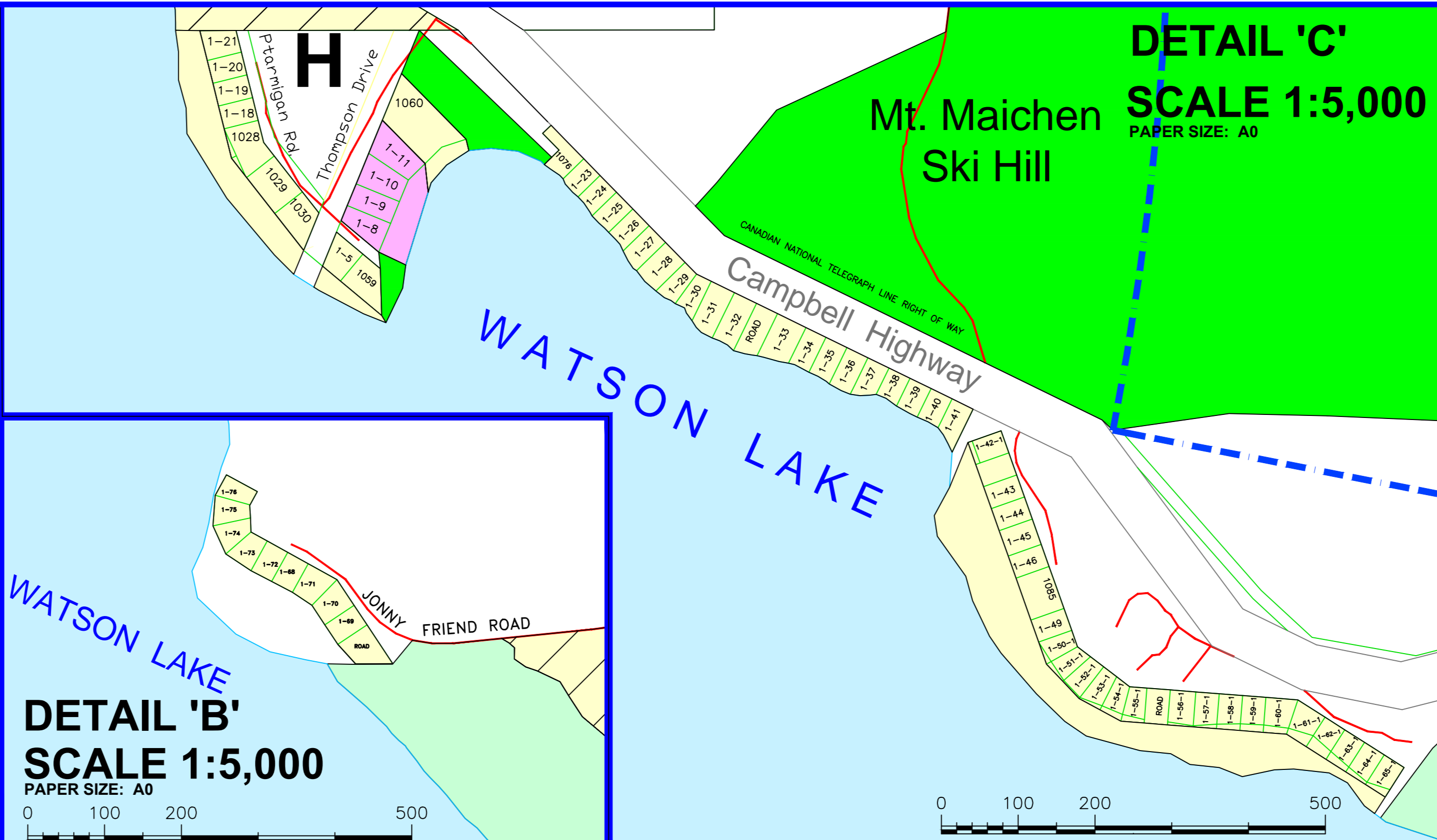
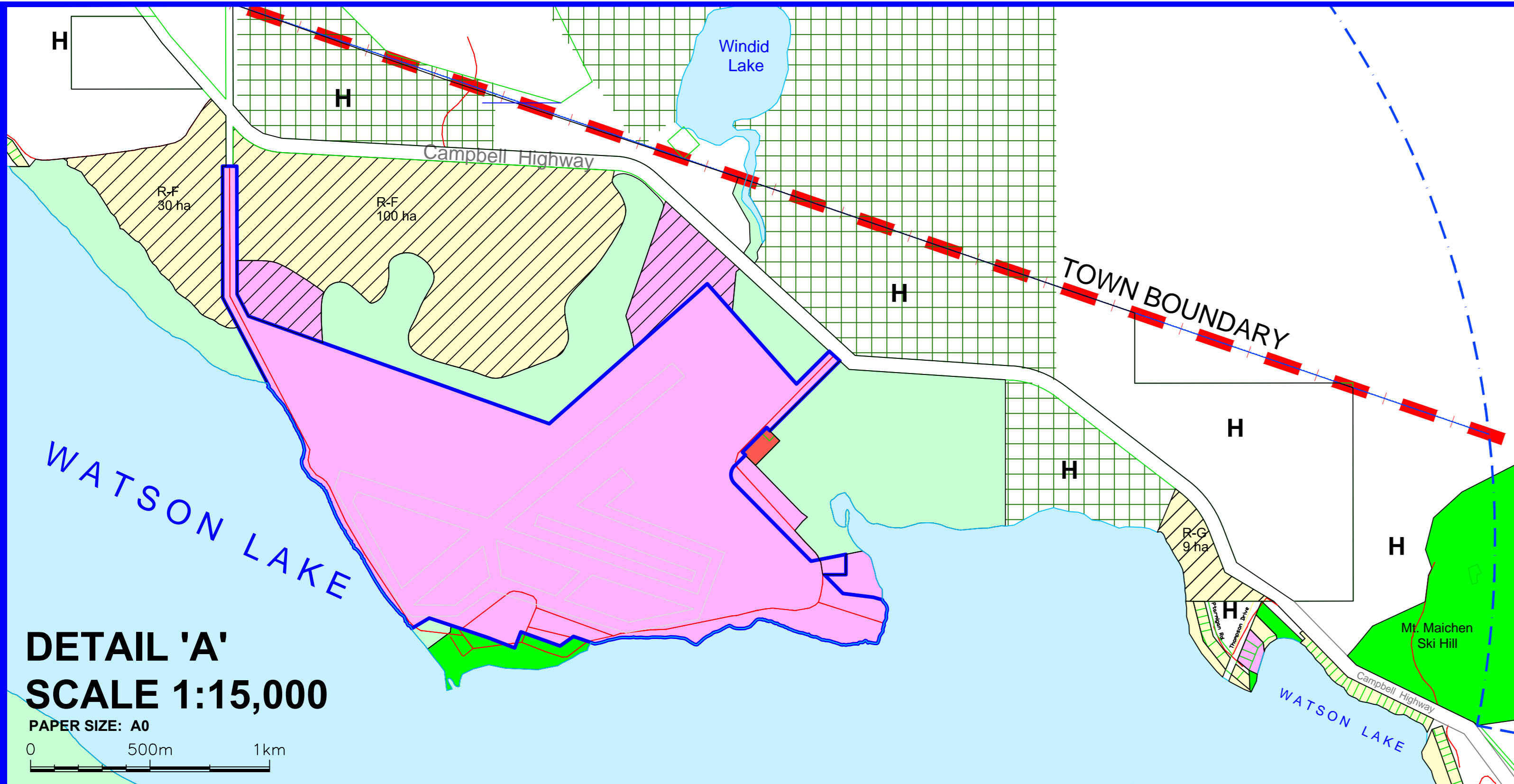
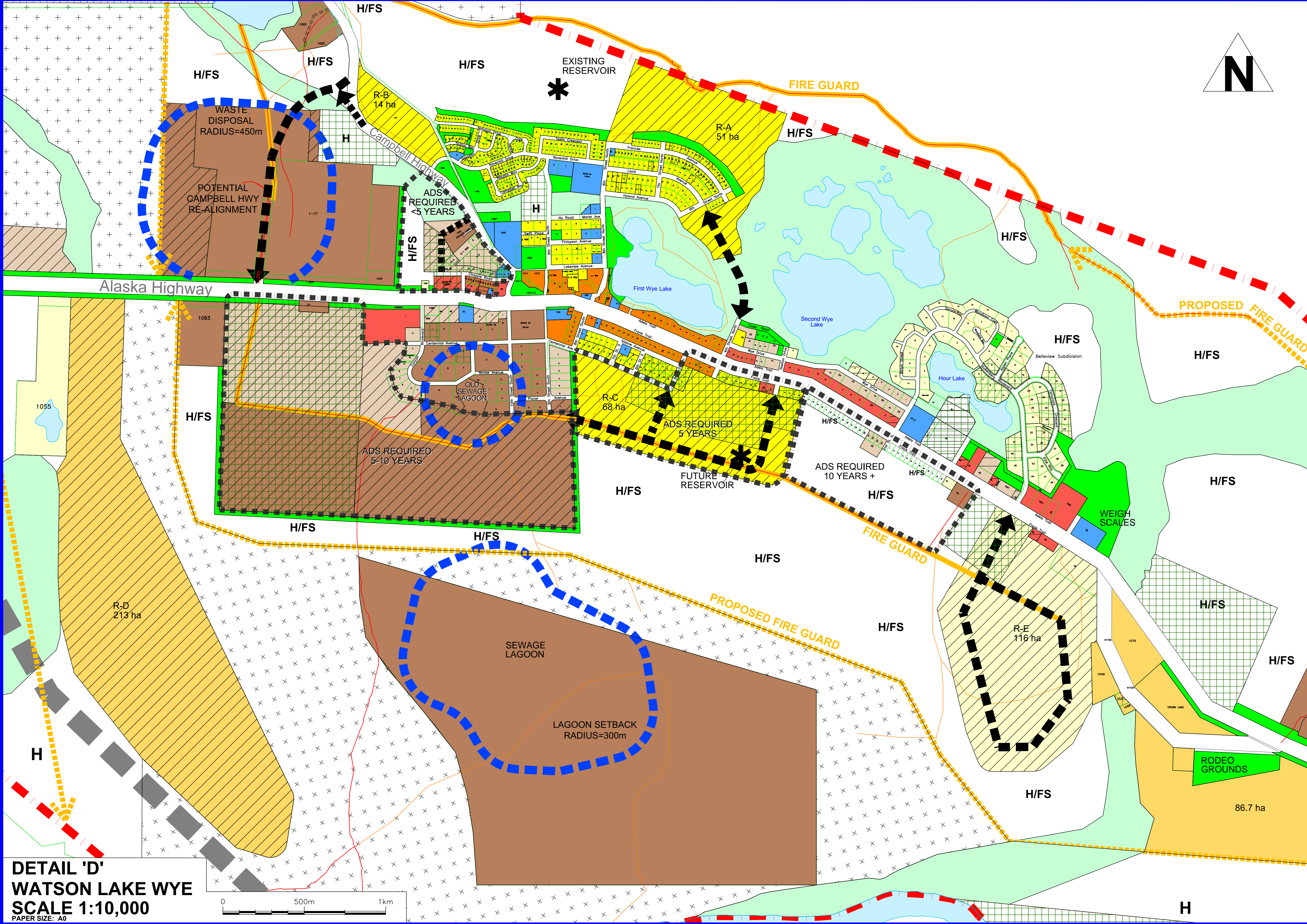


TOWN OF WATSON LAKE
OFFICIAL COMMUNITY PLAN
BYLAW 10-11
SEPTEMBER 2010



- Legend:**
- Zone:**
- URBAN RESIDENTIAL
 - COUNTRY RESIDENTIAL
 - RURAL RESIDENTIAL
 - LOCAL COMMERCIAL
 - HIGHWAY COMMERCIAL
 - HEAVY INDUSTRIAL
 - LIGHT INDUSTRIAL
 - AIRPORT
 - INSTITUTIONAL
 - PARKS & RECREATION
 - ENVIRONMENTAL PROTECTION
 - H HINTERLAND
- Overlay Zone:**
- POTENTIAL SELECTIVE SMALL LOGGING AREAS
 - LIARD FIRST NATION INTERIM PROTECTED
 - H/FS HINTERLAND / FIRE SMART AREA
 - FUTURE DEVELOPMENT / HOLDING ZONE
 - AERONAUTICS ACT ZONING RESTRICTIONS (OIC 1984-3970)
- Other Symbols:**
- TOWN BOUNDARY
 - SETBACK REQUIREMENT
 - FUTURE ROADWAY
 - POSSIBLE RAIL CORRIDOR
 - EXISTING FIRE GUARD
 - POTENTIAL FIRE GUARD
 - EXISTING ROAD
 - EXISTING TRAIL
 - AREA DEVELOPMENT SCHEME (ADS)

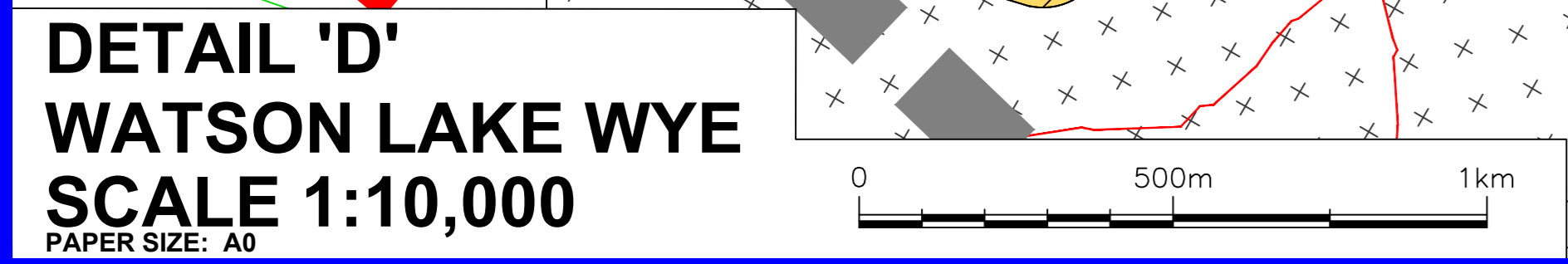


DATE	Amendment Number	DESCRIPTION	DATE	Amendment Number	DESCRIPTION

Original Signed by: _____ MAYOR _____ DATE _____
 _____ MUNICIPAL CLERK _____ DATE _____

FUTURE LAND USE - DETAILS

DRAWN BY: M. BROWNING



I:\data\proj\cta\10-01_watson_lake_dp\drawing\2010\10-01_dp-pp-09-27.rwg
 INUKSHUK PLANNING & DEVELOPMENT